

Geg.: Fachwerk aus 1.3.2

Ges.: Zeichnerische Ermittlung der Stabkräfte S_4, S_5, S_6

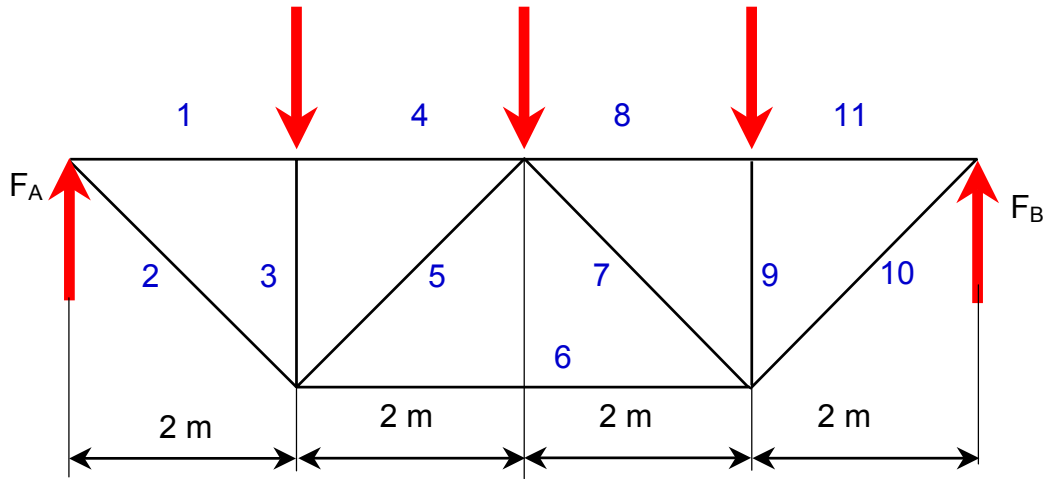
$F_A = 4,75 \text{ kN}$

$F_B = 4,25 \text{ kN}$

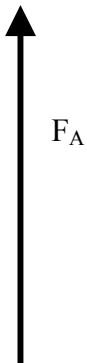
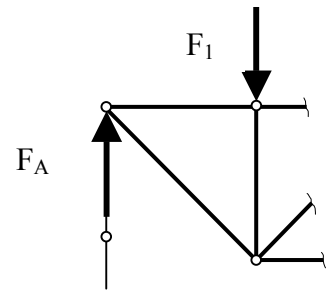
$F_1 = 4 \text{ kN}$

$F_2 = 2 \text{ kN}$

$F_3 = 3 \text{ kN}$



Lageplan : $M_L = 1 \text{ m/cm}$



o P

Kräfteplan: $M_K = 1 \text{ kN/cm}$

o